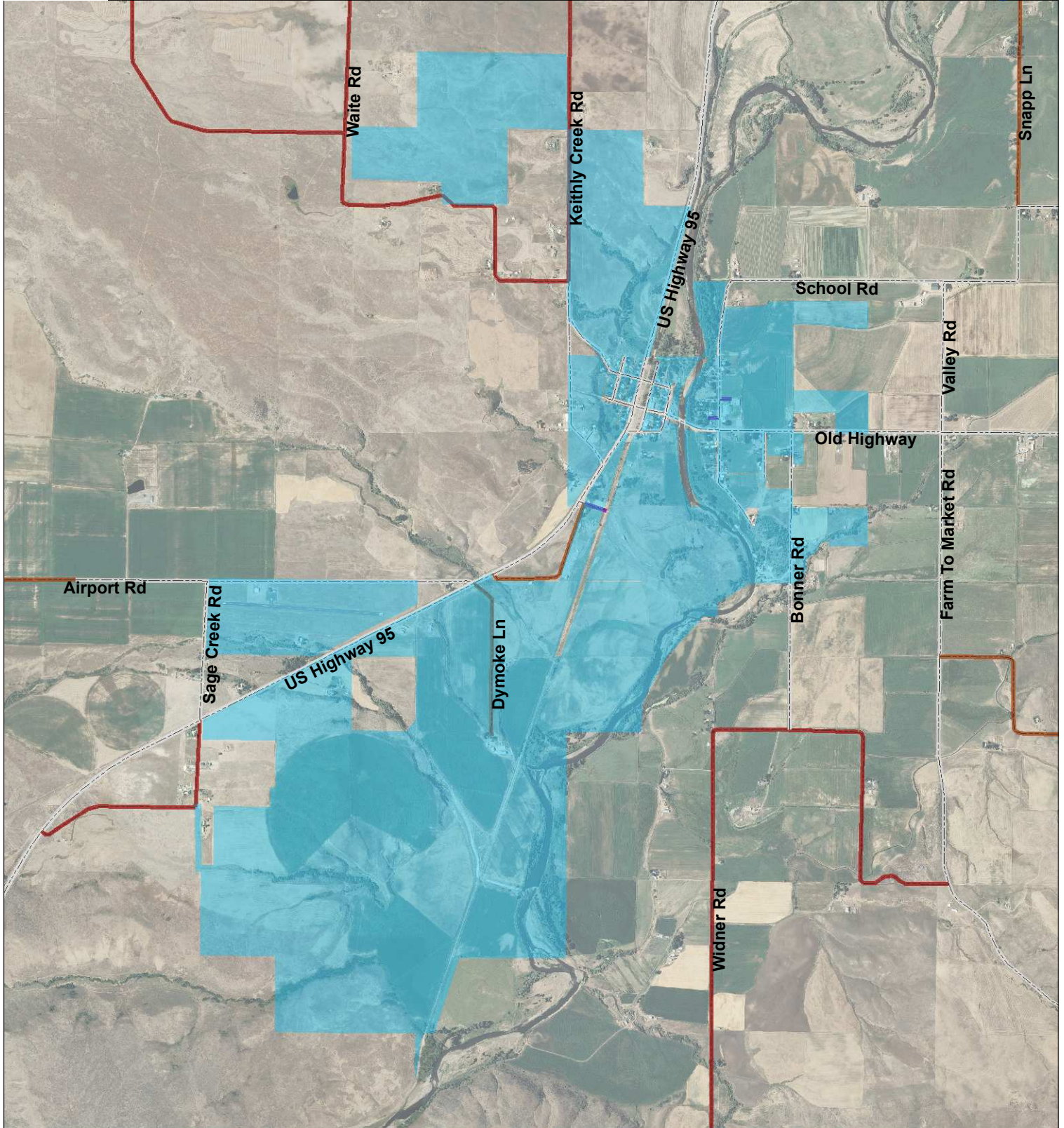




# CITY OF MIDVALE

THIS MAP CREATED BY THE OFFICE OF THE  
**WASHINGTON COUNTY ASSESSOR**



1 inch = 2,369.1 feet



BASED ON GOVERNMENT SURVEYS & OFFICIAL RECORDS  
ON FILE AT THE OFFICE OF THE COUNTY RECORDER OF  
WASHINGTON COUNTY, IDAHO.  
FOR ASSESSMENT PURPOSES ONLY  
DOES NOT GUARANTEE BOUNDARIES

Legend					
	TOWNSHIP LINES		STATE HWY		GRAVEL/DIRT
	SECTION LINES		PAVED		CITY
	1/4 SECTION LINES		PAVED		NATIONAL FOREST
	RIVERS		GRAVEL		PRIVATE