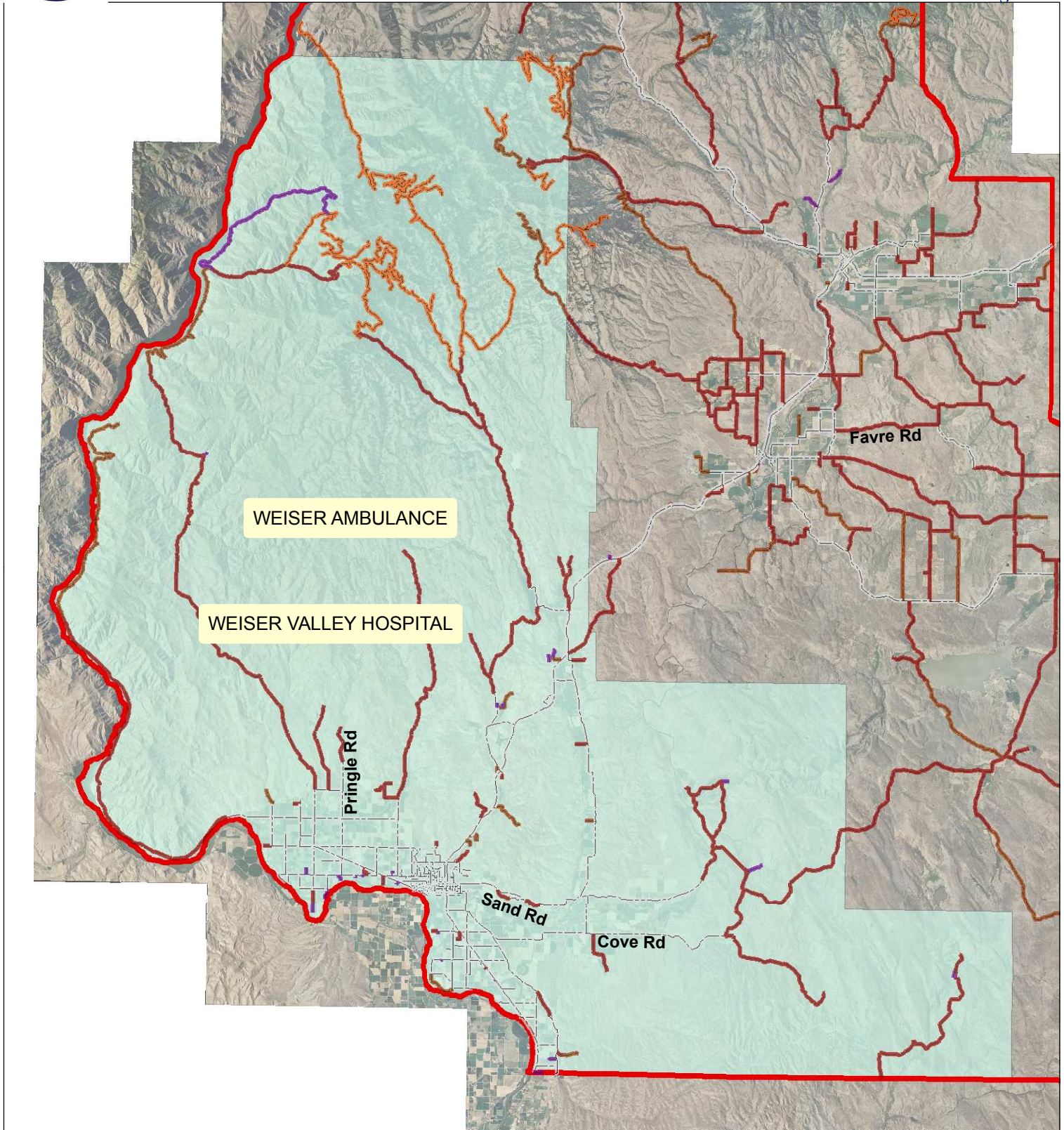


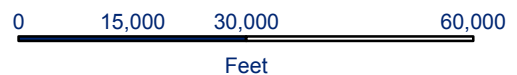


HOSPITAL & AMBULANCE DISTRICTS

THIS MAP CREATED BY THE OFFICE OF THE
WASHINGTON COUNTY ASSESSOR



1 inch = 25,308.8 feet



BASED ON GOVERNMENT SURVEYS & OFFICIAL RECORDS
ON FILE AT THE OFFICE OF THE COUNTY RECORDER OF
WASHINGTON COUNTY, IDAHO.
FOR ASSESSMENT PURPOSES ONLY
DOES NOT GUARANTEE BOUNDARIES

Legend					
	TOWNSHIP LINES		STATE HWY		GRAVEL/DIRT
	SECTION LINES		PAVED		CITY
	1/4 SECTION LINES		PAVED		NATIONAL FOREST
	RIVERS		GRAVEL		PRIVATE